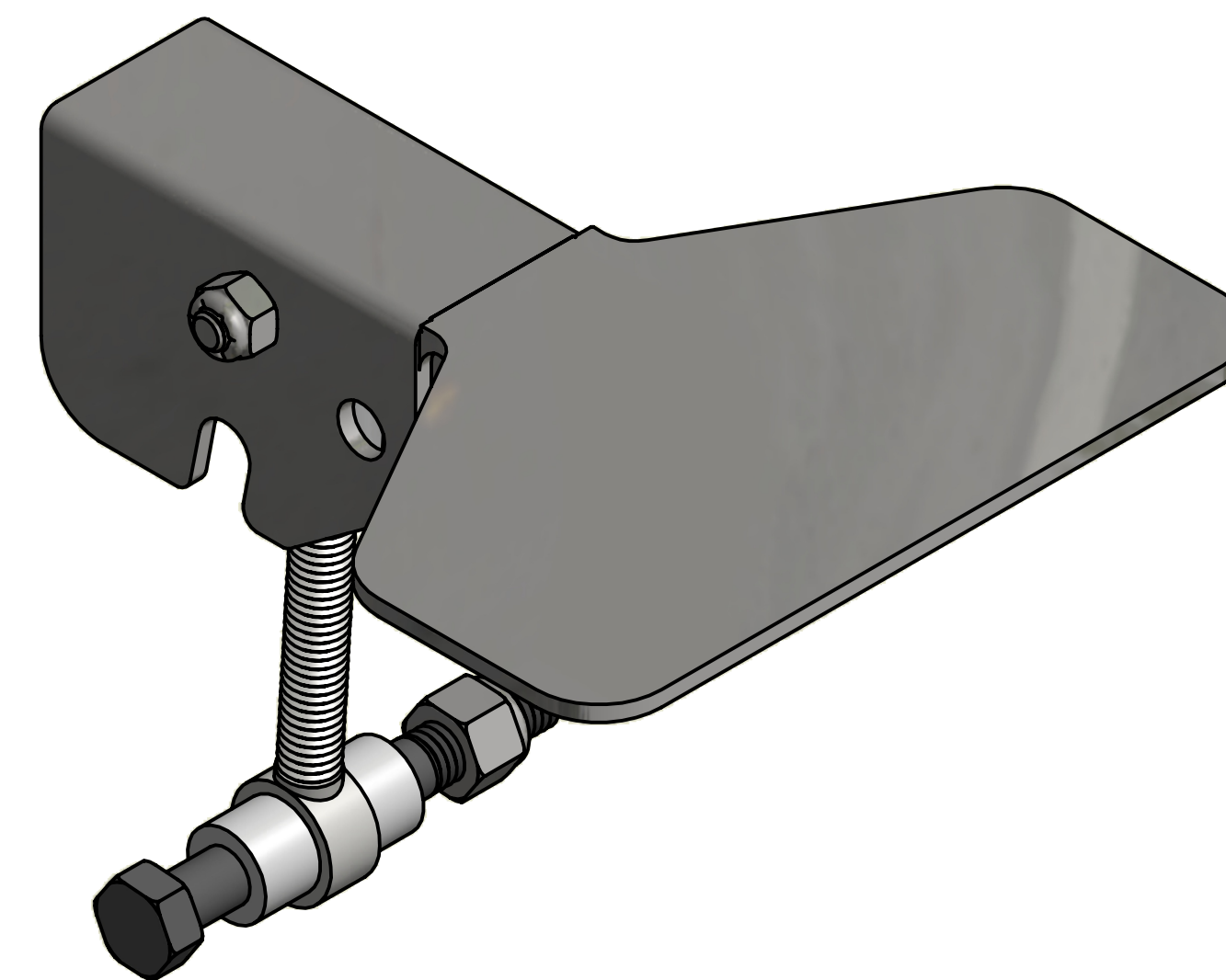
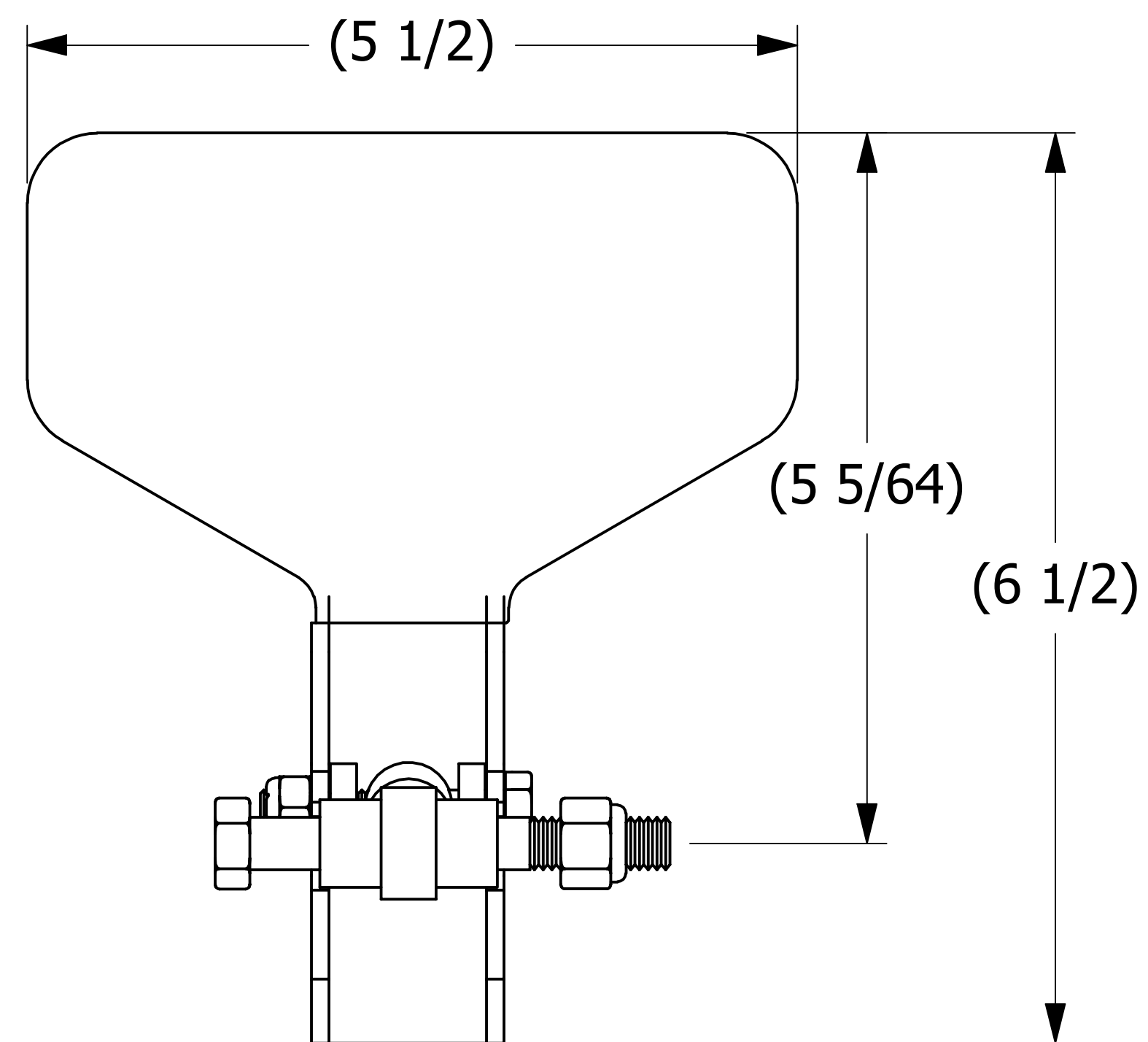
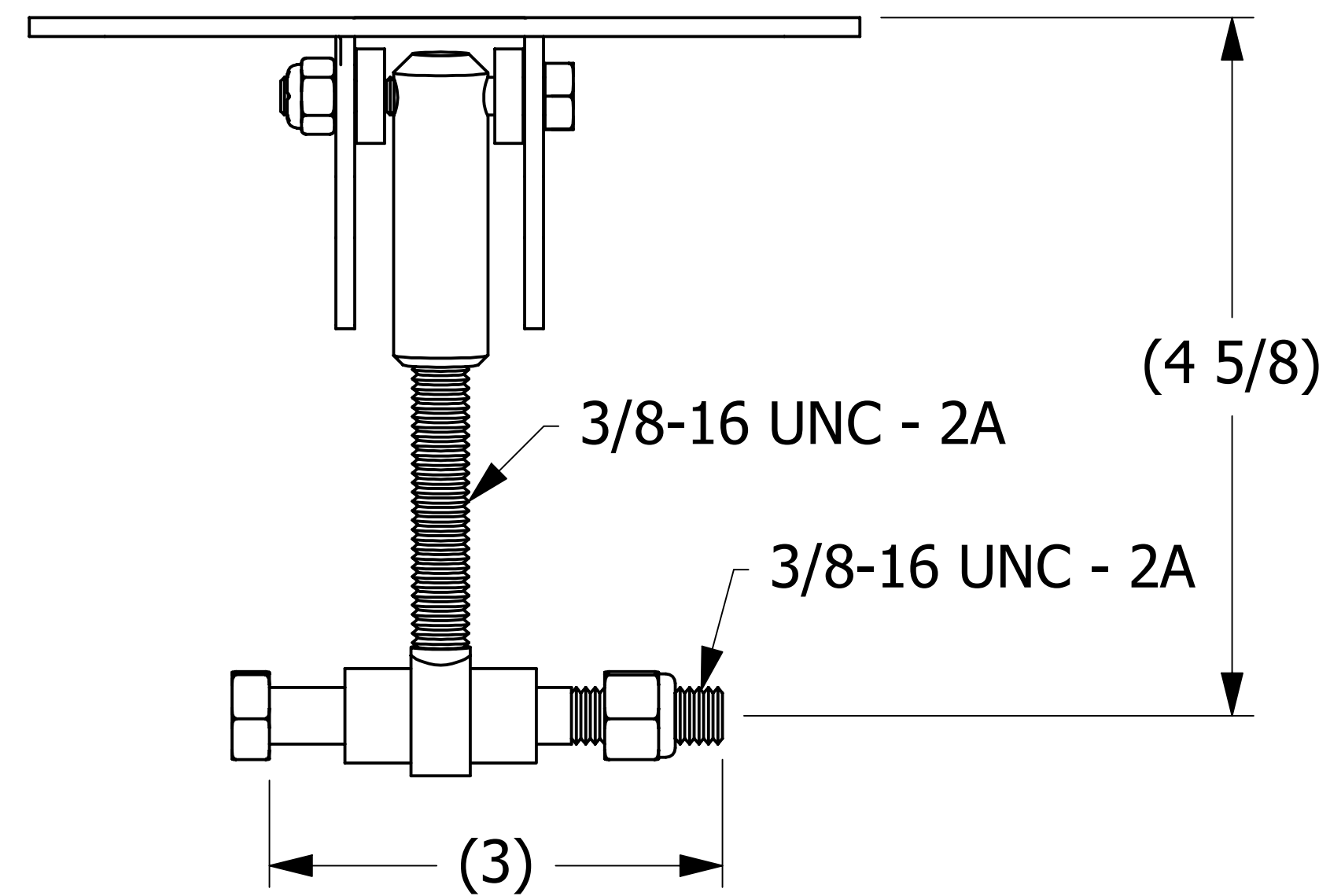


SALES DRAWING

SALES DRAWING



REV	BY	DATE	DESCRIPTION
D	REH	02-18-10	UPDATED DRAWING, ADDED BOM, & DELETE NOTES
C	CHL	01-12-10	ADDED SUBASSEMBLIES & NOTES
B	FOD	12-18-98	CHANGED MATERIL FOR ITEM #1
A	MRC		#6 IN BOM WAS PART# TE20B

UNLESS OTHERWISE SPECIFIED DIMENSIONAL TOLERANCES FRACTIONAL: $\pm 1/16$ X.XX: $\pm .015$ X.XXX: $\pm .005$ ANGULAR: $\pm 1^\circ$ DEBURR ALL SHARP EDGES. ALL MACHINED SURFACES TO HAVE A 125 RMS FINISH UNLESS NOTED OTHERWISE. THIRD ANGLE PROJECTION	DRAWN BY:	ACC
	CHECKED BY:	CHL
	PROTOTYPE BY:	ACC
	PROTOTYPE DATE:	10/25/1995
	APPROVED FOR PRODUCTION BY:	ASS
	PRODUCTION DATE:	10/25/1995

SALCO PRODUCTS, INC.		
PART NAME: HATCH COVER LATCH ASSEMBLY 20"		
MATERIAL: SS/CS		
PROJECT #:	SHEET #: 1 OF 1	SCALE: 1:1
DRAWING #: D7721	PART #: LAL20TH95	

THIS PRINT, PROPERTY OF SALCO PRODUCTS INC. CONTAINS PROPRIETARY INFORMATION AND MUST NOT BE COPIED, REPRODUCED, OR USED DETRIMENTALLY TO OUR INTEREST.